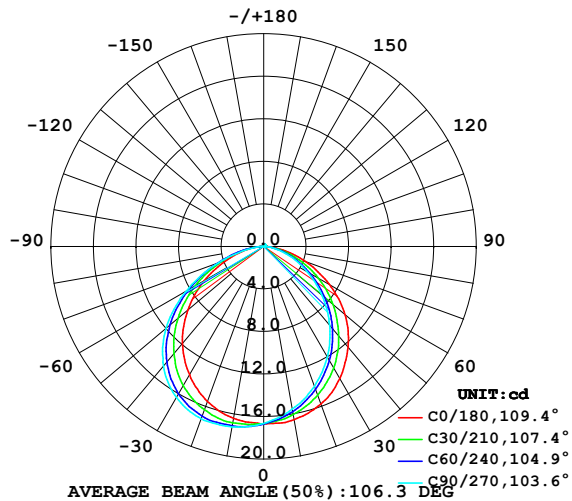


## LUMINAIRE PHOTOMETRIC TEST REPORT

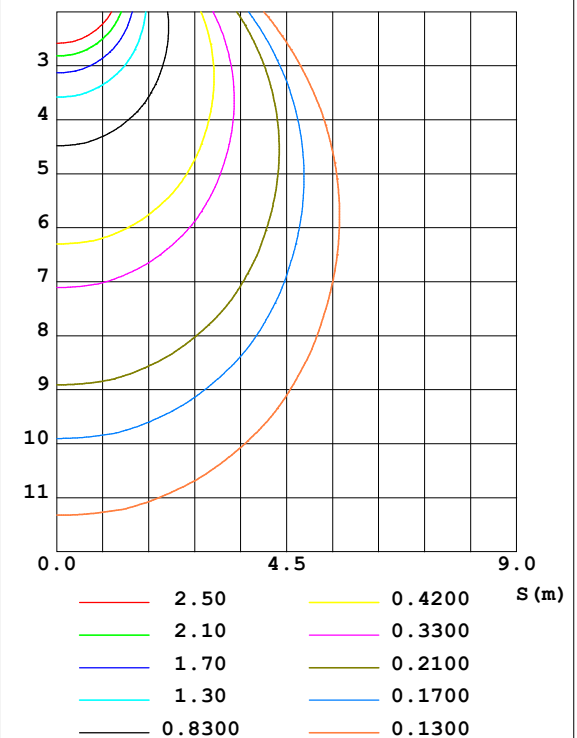
Test:U:24.00V I:0.1681A P:4.034W PF:1.000 Lamp Flux:46.2479x1 lm		
NAME: SP01-24V-5050-60-RGBW-3000K-80-B	TYPE: 硅胶	WEIGHT:
DIM.: 15mm*7mm	SPEC.:	SERIAL No.:20221220
MFR.: OLYMPIA	SUR.:1*0.0015	PROTECTION ANGLE:

DATA OF LAMP		PHOTOMETRIC DATA Eff: 11.46 lm/W			
MODEL	5050	I <sub>max</sub> (cd)	17.28	S/MH (C0/180)	1.27
NOMINAL POWER (W)	17	LOR (%)	100.0	S/MH (C90/270)	1.09
RATED VOLTAGE (V)	24	TOTAL FLUX (lm)	46.248	η UP, DN (C0-180)	1.0, 43.2
NOMINAL FLUX (lm)	46.2479	CIE CLASS	DIRECT	η UP, DN (C180-360)	0.6, 55.2
LAMPS INSIDE	1	η up (%)	1.6	CIBSE SHR NOM	1.25
TEST VOLTAGE (V)	24.0	η down (%)	98.4	CIBSE SHR MAX	1.35

LUMINOUS INTENSITY DISTRIBUTION DIAGRAM



C0 PLANE ISOLUX DIAGRAM (UNIT:lx)



C Range: 0 - 360DEG  
C Interval: 30.0DEG  
Test Speed: HIGH  
Temperature: 25.3DEG  
Operators: WFW  
Test Date: 2022-12-14

γ Range: 0 - 180DEG  
γ Interval: 1.0DEG  
Test System: EVERFINE GO-2000B\_V1 SYSTEM V2.0.269  
Humidity: 65.0%  
Test Distance: 10.800m [K=1.0000]  
Remarks:

ZONAL FLUX DIAGRAM  
AND LUMINANCE LIMITATION CURVES

## ZONAL FLUX DIAGRAM:

$\gamma$	C0	C45	C90	C135	C180	C225	C270	C315	$\gamma$	$\Phi$ zone	$\Phi$ total	%lum, lamp
10	16.53	15.90	15.54	15.82	16.43	16.98	17.22	17.02	0- 10	1.580	1.580	3.42,3.42
20	15.76	14.58	14.01	14.47	15.50	16.65	17.23	16.77	10- 20	4.543	6.123	13.2,13.2
30	14.33	12.78	12.00	12.60	13.95	15.57	16.41	15.85	20- 30	6.902	13.03	28.2,28.2
40	12.36	10.52	9.645	10.29	11.90	13.66	14.68	14.05	30- 40	8.270	21.30	46,46
50	9.983	8.031	7.159	7.747	9.319	11.01	11.99	11.56	40- 50	8.418	29.71	64.2,64.2
60	7.123	5.440	4.714	5.181	6.465	7.791	8.432	8.369	50- 60	7.298	37.01	80,80
70	4.200	3.054	2.561	2.919	3.619	4.477	4.519	4.906	60- 70	5.164	42.18	91.2,91.2
80	1.630	1.139	0.8579	1.153	1.432	1.665	1.283	1.828	70- 80	2.679	44.86	97,97
90	0.1460	0.1074	0.1177	0.1006	0.0139	0.0279	0.0697	0.0557	80- 90	0.6538	45.51	98.4,98.4
100	0.0970	0.1074	0.1385	0.1074	0.0416	0.0346	0.0831	0.0415	90-100	0.0763	45.59	98.6,98.6
110	0.0970	0.1212	0.1593	0.1247	0.0693	0.0451	0.0831	0.0485	100-110	0.0893	45.67	98.8,98.8
120	0.0970	0.1351	0.1801	0.1488	0.0900	0.0727	0.0831	0.0831	110-120	0.0990	45.77	99,99
130	0.0970	0.1628	0.2009	0.1835	0.1177	0.0900	0.0831	0.1004	120-130	0.1084	45.88	99.2,99.2
140	0.1316	0.1835	0.2078	0.1939	0.1524	0.1074	0.0831	0.1143	130-140	0.1078	45.99	99.4,99.4
150	0.1731	0.1939	0.2078	0.1939	0.1871	0.1420	0.1039	0.1454	140-150	0.0996	46.09	99.7,99.7
160	0.1870	0.1939	0.2078	0.1939	0.2008	0.1939	0.1801	0.1904	150-160	0.0846	46.17	99.8,99.8
170	0.1938	0.1939	0.2078	0.1939	0.2008	0.1939	0.1801	0.2008	160-170	0.0551	46.23	100,100
180	0.1939	0.2008	0.2078	0.2008	0.2008	0.1905	0.1939	0.2147	170-180	0.0188	46.25	100,100
DEG	LUMINOUS INTENSITY:cd									UNIT:lm		



LUMINANCE cd/(m2)		
G (DEG)	C0/180	C90/270
85	73	40
80	94	49
75	110	63
70	123	75
65	133	85
60	142	94
55	150	103
50	155	111
45	159	119

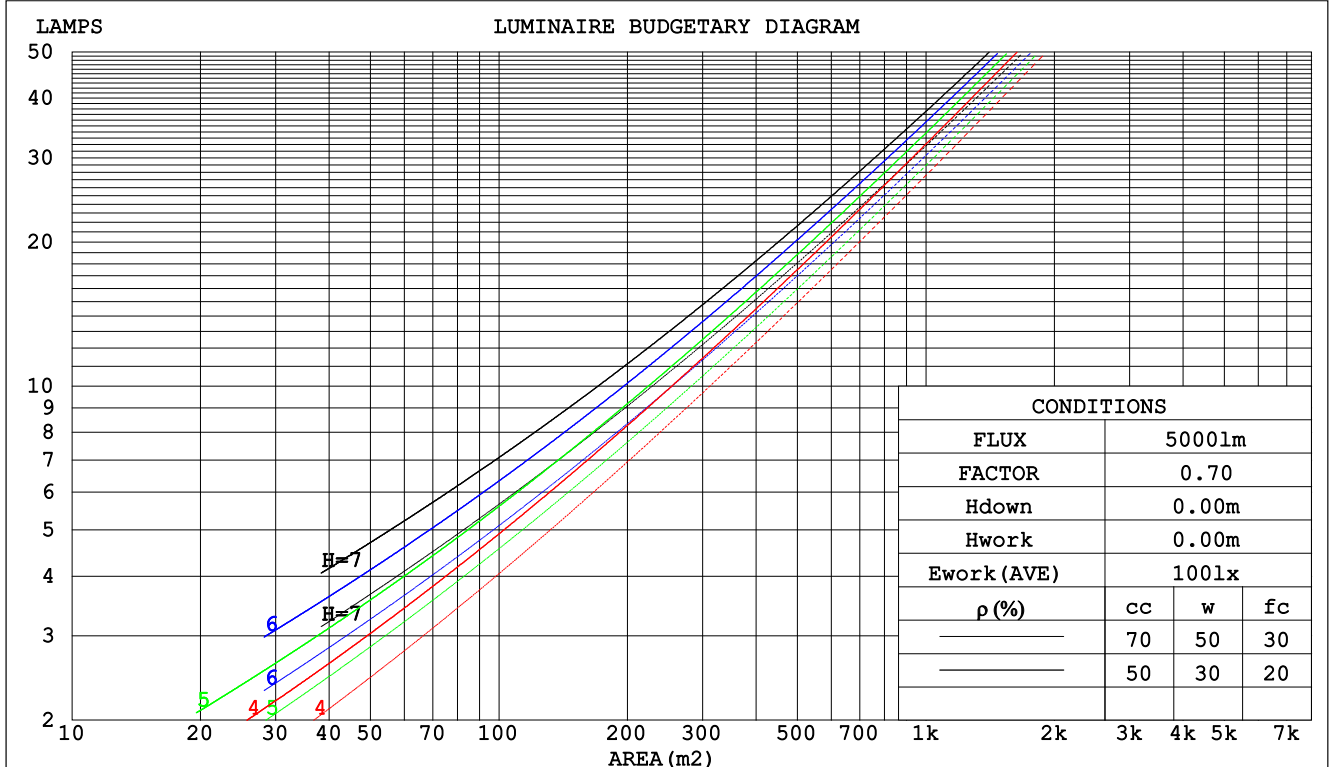
C Range: 0 - 360DEG  
C Interval: 30.0DEG  
Test Speed: HIGH  
Temperature:25.3DEG  
Operators:WFW  
Test Date:2022-12-14

$\gamma$  Range: 0 - 180DEG  
 $\gamma$  Interval: 1.0DEG  
Test System:EVERFINE GO-2000B\_V1 SYSTEM V2.0.269  
Humidity:65.0%  
Test Distance:10.800m [K=1.0000]  
Remarks:

## CU AND LUMINAIRE BUDGETARY ESTIMATE DIAGRAM

Test:U:24.00V I:0.1681A P:4.034W PF:1.000 Lamp Flux:46.2479x1 lm		
NAME: SP01-24V-5050-60-RGBW-3000K-80-B	TYPE: 硅胶	WEIGHT:
DIM.: 15mm*7mm	SPEC.:	SERIAL No.:20221220
MFR.: OLYMPIA	SUR.:1*0.0015	PROTECTION ANGLE:

$\rho_{cc}$	80%			70%			50%			30%			10%			0
$\rho_w$	50%	30%	10%	50%	30%	10%	50%	30%	10%	50%	30%	10%	50%	30%	10%	0
$\rho_{fc}$	20%			20%			20%			20%			20%			0
RCR	RCR:Room Cavity Ratio						Coefficients of Utilization(CU)									
0.0	1.19	1.19	1.19	1.16	1.16	1.16	1.10	1.10	1.10	1.05	1.05	1.05	1.01	1.01	1.01	.98
1.0	1.04	1.00	.96	1.02	.98	.95	.97	.94	.91	.93	.91	.88	.89	.87	.85	.83
2.0	.91	.85	.79	.89	.83	.78	.85	.80	.76	.82	.78	.74	.79	.75	.72	.70
3.0	.80	.72	.66	.79	.71	.65	.75	.69	.64	.72	.67	.63	.70	.65	.61	.59
4.0	.71	.63	.56	.70	.62	.56	.67	.60	.55	.65	.59	.54	.62	.57	.53	.51
5.0	.64	.55	.48	.63	.54	.48	.60	.53	.47	.58	.52	.47	.56	.51	.46	.44
6.0	.57	.49	.42	.56	.48	.42	.54	.47	.42	.53	.46	.41	.51	.45	.41	.38
7.0	.52	.43	.37	.51	.43	.37	.50	.42	.37	.48	.41	.36	.46	.41	.36	.34
8.0	.48	.39	.33	.47	.39	.33	.45	.38	.33	.44	.37	.33	.43	.37	.32	.30
9.0	.44	.35	.30	.43	.35	.30	.42	.35	.30	.41	.34	.29	.39	.34	.29	.27
10.0	.40	.32	.27	.40	.32	.27	.39	.32	.27	.38	.31	.27	.37	.31	.27	.25



C Range: 0 - 360DEG  
C Interval: 30.0DEG  
Test Speed: HIGH  
Temperature:25.3DEG  
Operators:WFW  
Test Date:2022-12-14

$\gamma$  Range: 0 - 180DEG  
 $\gamma$  Interval: 1.0DEG  
Test System:EVERFINE GO-2000B\_V1 SYSTEM V2.0.269  
Humidity:65.0%  
Test Distance:10.800m [K=1.0000]  
Remarks:

## WEC AND CCEC

Test:U:24.00V I:0.1681A P:4.034W PF:1.000 Lamp Flux:46.2479x1 lm		
NAME: SP01-24V-5050-60-RGBW-3000K-80-B	TYPE: 硅胶	WEIGHT:
DIM.: 15mm*7mm	SPEC.:	SERIAL No.:20221220
MFR.: OLYMPIA	SUR.:1*0.0015	PROTECTION ANGLE:

pcc	80%			70%			50%			30%			10%			0	
pw	50%	30%	10%	50%	30%	10%	50%	30%	10%	50%	30%	10%	50%	30%	10%	0	
pfc	20%			20%			20%			20%			20%			0	
RCR	RCR:Room Cavity Ratio						Wall Exitance Coefficients(WEC)										
0.0																	
1.0	.296	.168	.053	.288	.164	.052	.274	.157	.050	.261	.151	.048	.249	.145	.047		
2.0	.281	.154	.047	.274	.151	.047	.262	.146	.045	.250	.140	.044	.240	.136	.043		
3.0	.262	.139	.042	.256	.137	.041	.245	.133	.040	.235	.129	.039	.225	.125	.039		
4.0	.243	.126	.037	.237	.124	.037	.228	.121	.036	.218	.117	.035	.210	.114	.035		
5.0	.225	.115	.033	.220	.113	.033	.212	.110	.032	.204	.107	.032	.196	.105	.031		
6.0	.209	.105	.030	.205	.104	.030	.197	.101	.029	.190	.099	.029	.183	.096	.029		
7.0	.195	.097	.027	.192	.095	.027	.185	.093	.027	.178	.091	.027	.172	.089	.026		
8.0	.183	.089	.025	.179	.088	.025	.173	.086	.025	.167	.085	.024	.162	.083	.024		
9.0	.171	.083	.023	.169	.082	.023	.163	.080	.023	.157	.079	.023	.152	.077	.022		
10.0	.161	.077	.021	.159	.077	.021	.154	.075	.021	.149	.074	.021	.144	.072	.021		

pcc	80%			70%			50%			30%			10%			0
pw	50%	30%	10%	50%	30%	10%	50%	30%	10%	50%	30%	10%	50%	30%	10%	0
pfc	20%			20%			20%			20%			20%			0
RCR	RCR:Room Cavity Ratio						Ceiling Cavity Exitance Coefficients(CCEC)									
0.0	.203	.203	.203	.173	.173	.173	.118	.118	.118	.068	.068	.068	.022	.022	.022	
1.0	.192	.169	.148	.164	.145	.127	.112	.100	.088	.065	.058	.051	.021	.019	.017	
2.0	.183	.144	.112	.157	.124	.097	.108	.086	.067	.062	.050	.039	.020	.016	.013	
3.0	.175	.127	.088	.150	.109	.076	.103	.076	.053	.060	.044	.032	.019	.014	.010	
4.0	.168	.113	.072	.144	.098	.062	.099	.068	.044	.057	.040	.026	.018	.013	.009	
5.0	.160	.103	.060	.138	.089	.053	.095	.062	.037	.055	.037	.022	.018	.012	.007	
6.0	.153	.095	.052	.132	.082	.046	.091	.057	.032	.053	.034	.019	.017	.011	.006	
7.0	.147	.088	.046	.126	.076	.040	.087	.053	.029	.051	.031	.017	.016	.010	.006	
8.0	.140	.082	.042	.121	.071	.036	.084	.050	.026	.049	.029	.015	.016	.010	.005	
9.0	.134	.077	.038	.116	.067	.033	.080	.047	.024	.047	.028	.014	.015	.009	.005	
10.0	.129	.073	.035	.111	.063	.031	.077	.044	.022	.045	.026	.013	.015	.009	.004	

C Range: 0 - 360DEG  
 C Interval: 30.0DEG  
 Test Speed: HIGH  
 Temperature:25.3DEG  
 Operators:WFW  
 Test Date:2022-12-14

γ Range: 0 - 180DEG  
 γ Interval: 1.0DEG  
 Test System:EVERFINE GO-2000B\_V1 SYSTEM V2.0.269  
 Humidity:65.0%  
 Test Distance:10.800m [K=1.0000]  
 Remarks:

### Uncorrected UGR Table

Test:U:24.00V I:0.1681A P:4.034W PF:1.000 Lamp Flux:46.2479x1 lm										
NAME: SP01-24V-5050-60-RGBW-3000K-80-B					TYPE: 硅胶			WEIGHT:		
DIM.: 15mm*7mm					SPEC.:			SERIAL No.:20221220		
MFR.: OLYMPIA					SUR.:1*0.0015			PROTECTION ANGLE:		
ceiling/cavity	0.7	0.7	0.5	0.5	0.3	0.7	0.7	0.5	0.5	0.3
walls	0.5	0.3	0.5	0.3	0.3	0.5	0.3	0.5	0.3	0.3
working plane	0.2	0.2	0.2	0.2	0.2	0.2	0.2	0.2	0.2	0.2
Room dimensions	Viewed crosswise					Viewed endwise				
x = 2H y = 2H	5.6	7.1	5.9	7.3	7.5	4.0	5.5	4.3	5.7	5.9
3H	7.0	8.4	7.4	8.6	8.9	5.1	6.4	5.4	6.7	7.0
4H	7.6	8.9	7.9	9.1	9.4	5.4	6.7	5.8	7.0	7.3
6H	7.9	9.2	8.3	9.5	9.8	5.6	6.9	6.0	7.2	7.5
8H	8.1	9.2	8.4	9.5	9.9	5.7	6.9	6.1	7.2	7.5
12H	8.1	9.2	8.5	9.5	9.9	5.7	6.8	6.1	7.1	7.5
4H 2H	5.9	7.2	6.3	7.5	7.8	4.6	5.9	5.0	6.2	6.5
3H	7.5	8.6	7.9	8.9	9.3	5.9	7.0	6.2	7.3	7.6
4H	8.2	9.2	8.6	9.5	9.9	6.3	7.4	6.7	7.7	8.1
6H	8.7	9.6	9.1	9.9	10.3	6.6	7.5	7.1	7.9	8.3
8H	8.8	9.7	9.2	10.0	10.5	6.7	7.6	7.2	8.0	8.4
12H	8.9	9.7	9.4	10.1	10.5	6.8	7.5	7.2	7.9	8.4
8H 4H	8.3	9.1	8.7	9.5	9.9	6.6	7.4	7.0	7.8	8.3
6H	8.9	9.6	9.3	10.0	10.4	7.0	7.7	7.5	8.2	8.6
8H	9.1	9.7	9.6	10.1	10.6	7.2	7.8	7.7	8.2	8.7
12H	9.2	9.7	9.7	10.2	10.7	7.3	7.8	7.8	8.3	8.8
12H 4H	8.2	9.0	8.7	9.4	9.9	6.6	7.4	7.1	7.8	8.2
6H	8.9	9.5	9.3	9.9	10.4	7.1	7.7	7.6	8.1	8.6
8H	9.1	9.6	9.6	10.1	10.6	7.3	7.8	7.8	8.3	8.8
Variations with the observer position at spacings:										
S = 1.0H	+ 0.1 / - 0.2					+ 0.3 / - 0.3				
1.5H	+ 0.2 / - 0.2					+ 0.2 / - 0.4				
2.0H	+ 0.5 / - 0.6					+ 0.3 / - 0.5				

CIE Pub.117 Corrected 46.25 lm Total Lamp Luminous Flux. (8log(F/F0) = -10.7)

C Range: 0 - 360DEG  
C Interval: 30.0DEG  
Test Speed: HIGH  
Temperature:25.3DEG  
Operators:WFW  
Test Date:2022-12-14

γ Range: 0 - 180DEG  
γ Interval: 1.0DEG  
Test System:EVERFINE GO-2000B\_V1 SYSTEM V2.0.269  
Humidity:65.0%  
Test Distance:10.800m [K=1.0000]  
Remarks:

### UTILIZATION FACTORS TABLE

Test:U:24.00V I:0.1681A P:4.034W PF:1.000 Lamp Flux:46.2479x1 lm		
NAME: SP01-24V-5050-60-RGBW-3000K-80-B	TYPE: 硅胶	WEIGHT:
DIM.: 15mm*7mm	SPEC.:	SERIAL No.:20221220
MFR.: OLYMPIA	SUR.:1*0.0015	PROTECTION ANGLE:

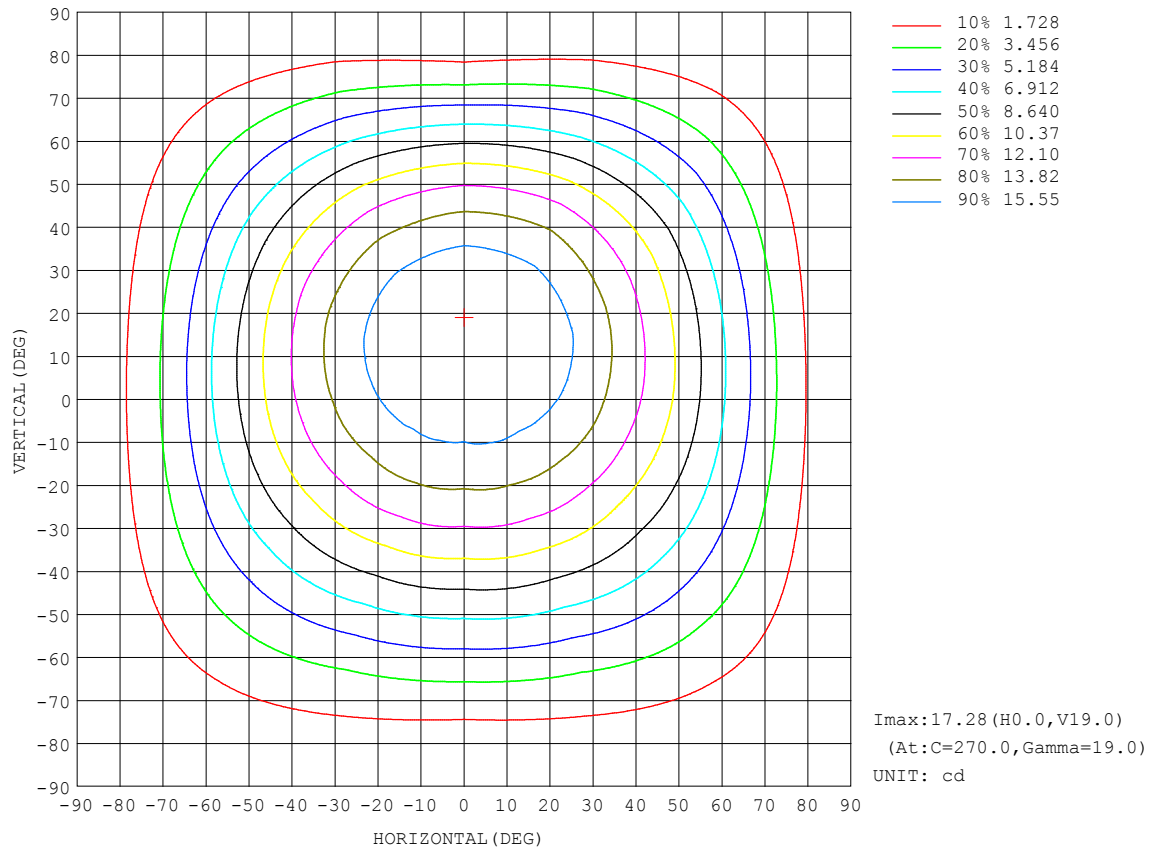
REFLECTANCE										
Ceiling	0.8	0.8	0.8	0.7	0.7	0.7	0.5	0.5	0.5	0
Walls	0.7	0.5	0.3	0.7	0.5	0.3	0.7	0.5	0.3	0
Working plane	0.2	0.2	0.2	0.2	0.2	0.2	0.2	0.2	0.2	0
ROOM INDEX	UTILIZATION FACTORS (PERCENT) $k(RI) \times RCR = 5$									
$k = 0.60$	58	47	40	57	46	40	56	46	40	33
0.80	68	57	50	67	56	50	65	56	49	42
1.00	77	66	59	76	65	58	73	66	58	51
1.25	84	74	67	82	73	66	79	71	65	58
1.50	89	79	72	87	78	72	84	76	71	63
2.00	95	87	81	94	86	80	90	84	78	71
2.50	99	92	86	97	90	85	93	87	83	74
3.00	103	96	91	100	94	89	96	91	87	78
4.00	106	101	96	104	99	95	99	95	92	83
5.00	109	104	100	106	102	98	101	98	95	86
ROOM INDEX	UF(total)									Direct
According to DIN EN 13032-2 2004			Suspended					SHRNM = 1.25		

C Range: 0 - 360DEG  
C Interval: 30.0DEG  
Test Speed: HIGH  
Temperature:25.3DEG  
Operators:WFW  
Test Date:2022-12-14

$\gamma$  Range: 0 - 180DEG  
 $\gamma$  Interval: 1.0DEG  
Test System:EVERFINE GO-2000B\_V1 SYSTEM V2.0.269  
Humidity:65.0%  
Test Distance:10.800m [K=1.0000]  
Remarks:

## ISOCANDELA DIAGRAM

Test:U:24.00V I:0.1681A P:4.034W PF:1.000 Lamp Flux:46.2479x1 lm		
NAME: SP01-24V-5050-60-RGBW-3000K-80-B	TYPE: 硅胶	WEIGHT:
DIM.: 15mm*7mm	SPEC.:	SERIAL No.:20221220
MFR.: OLYMPIA	SUR.:1*0.0015	PROTECTION ANGLE:

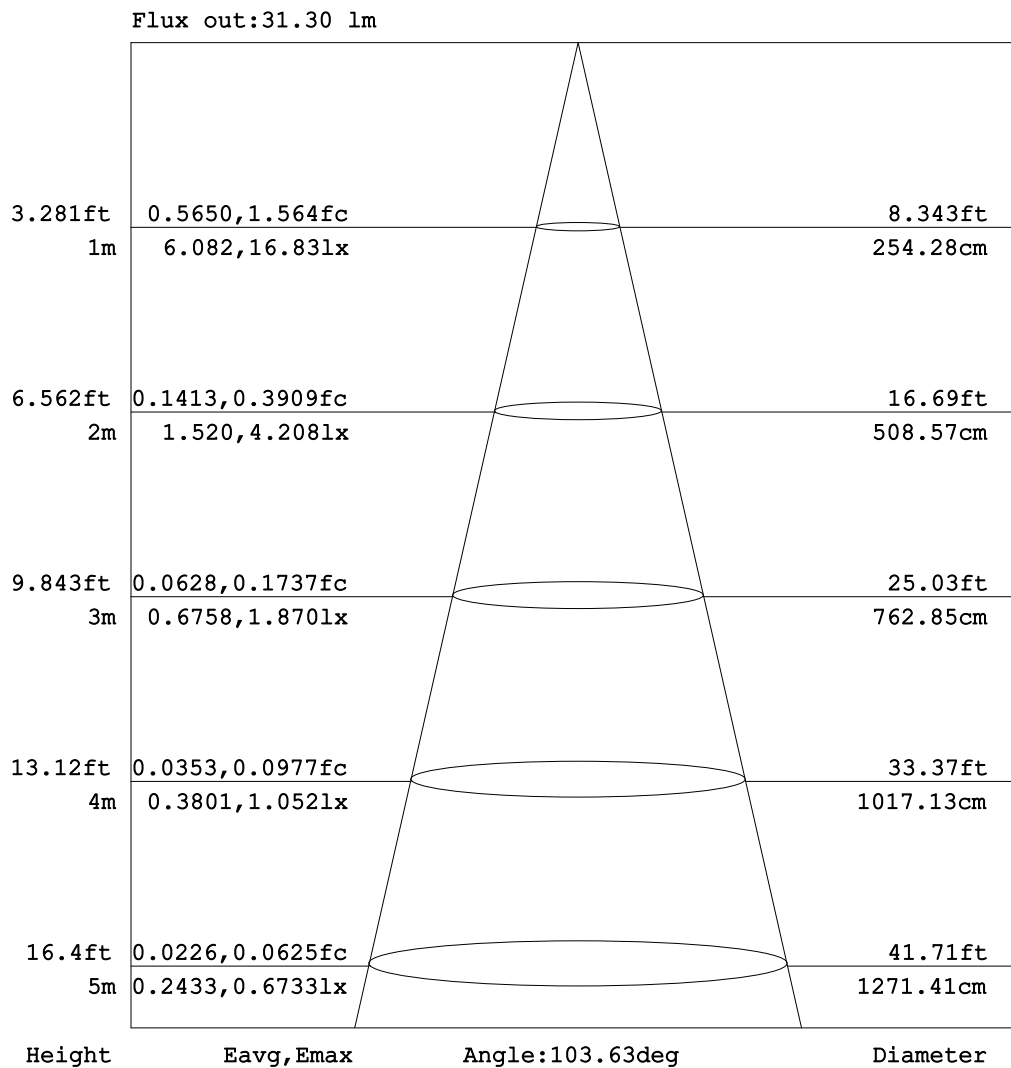


C Range: 0 - 360DEG  
C Interval: 30.0DEG  
Test Speed: HIGH  
Temperature:25.3DEG  
Operators:WFW  
Test Date:2022-12-14

$\gamma$  Range: 0 - 180DEG  
 $\gamma$  Interval: 1.0DEG  
Test System:EVERFINE GO-2000B\_V1 SYSTEM V2.0.269  
Humidity:65.0%  
Test Distance:10.800m [K=1.0000]  
Remarks:

## AAI Figure

Test:U:24.00V I:0.1681A P:4.034W PF:1.000 Lamp Flux:46.2479x1 lm		
NAME: SP01-24V-5050-60-RGBW-3000K-80-B	TYPE: 硅胶	WEIGHT:
DIM.: 15mm*7mm	SPEC.:	SERIAL No.:20221220
MFR.: OLYMPIA	SUR.:1*0.0015	PROTECTION ANGLE:



Note: The Curves indicate the illuminated area and the average illumination when the luminaire is at different distance.

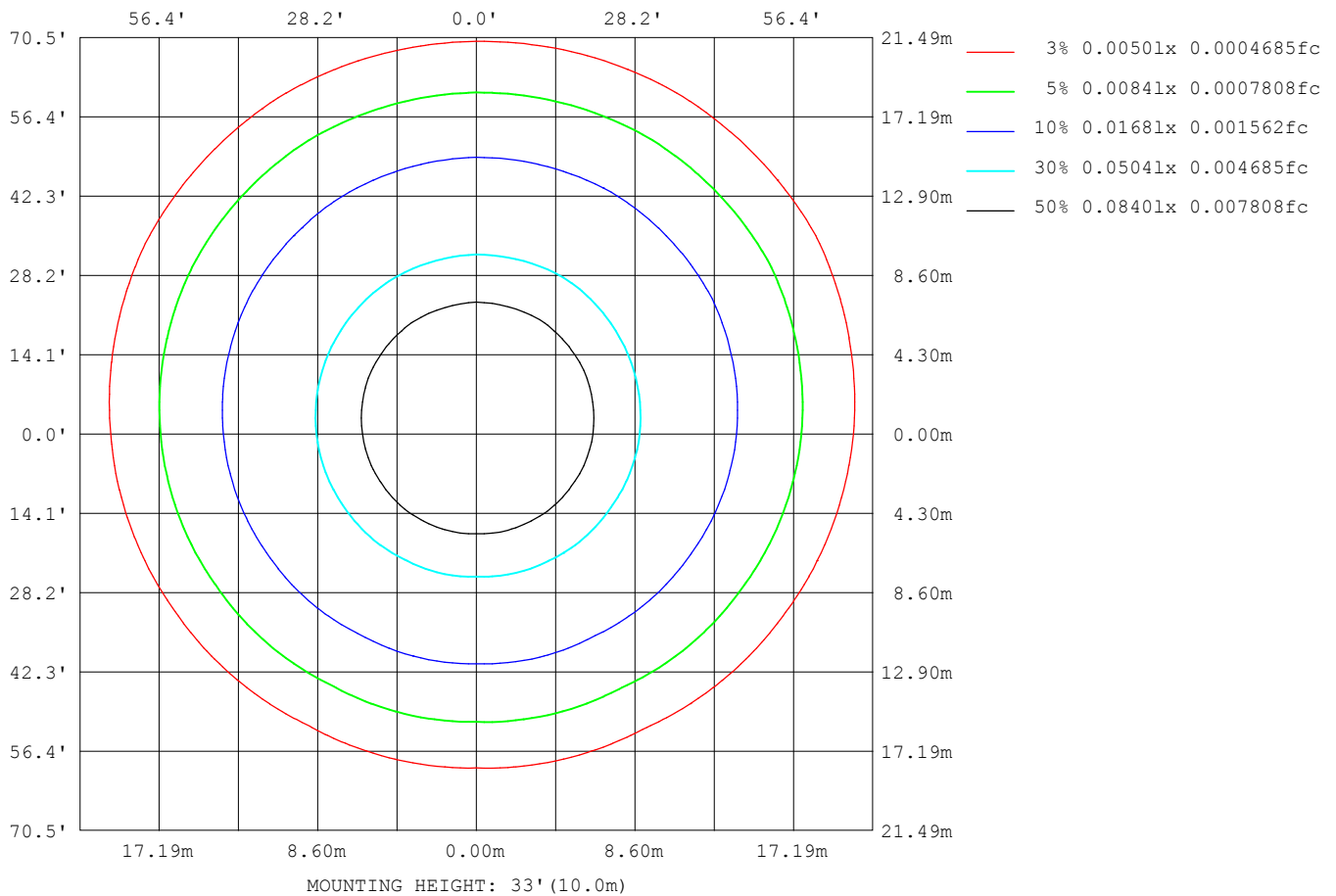
C Range: 0 - 360DEG  
C Interval: 30.0DEG  
Test Speed: HIGH  
Temperature: 25.3DEG  
Operators: WFW  
Test Date: 2022-12-14

γ Range: 0 - 180DEG  
γ Interval: 1.0DEG  
Test System: EVERFINE GO-2000B\_V1 SYSTEM V2.0.269  
Humidity: 65.0%  
Test Distance: 10.800m [K=1.0000]  
Remarks:



## ISOLUX DIAGRAM

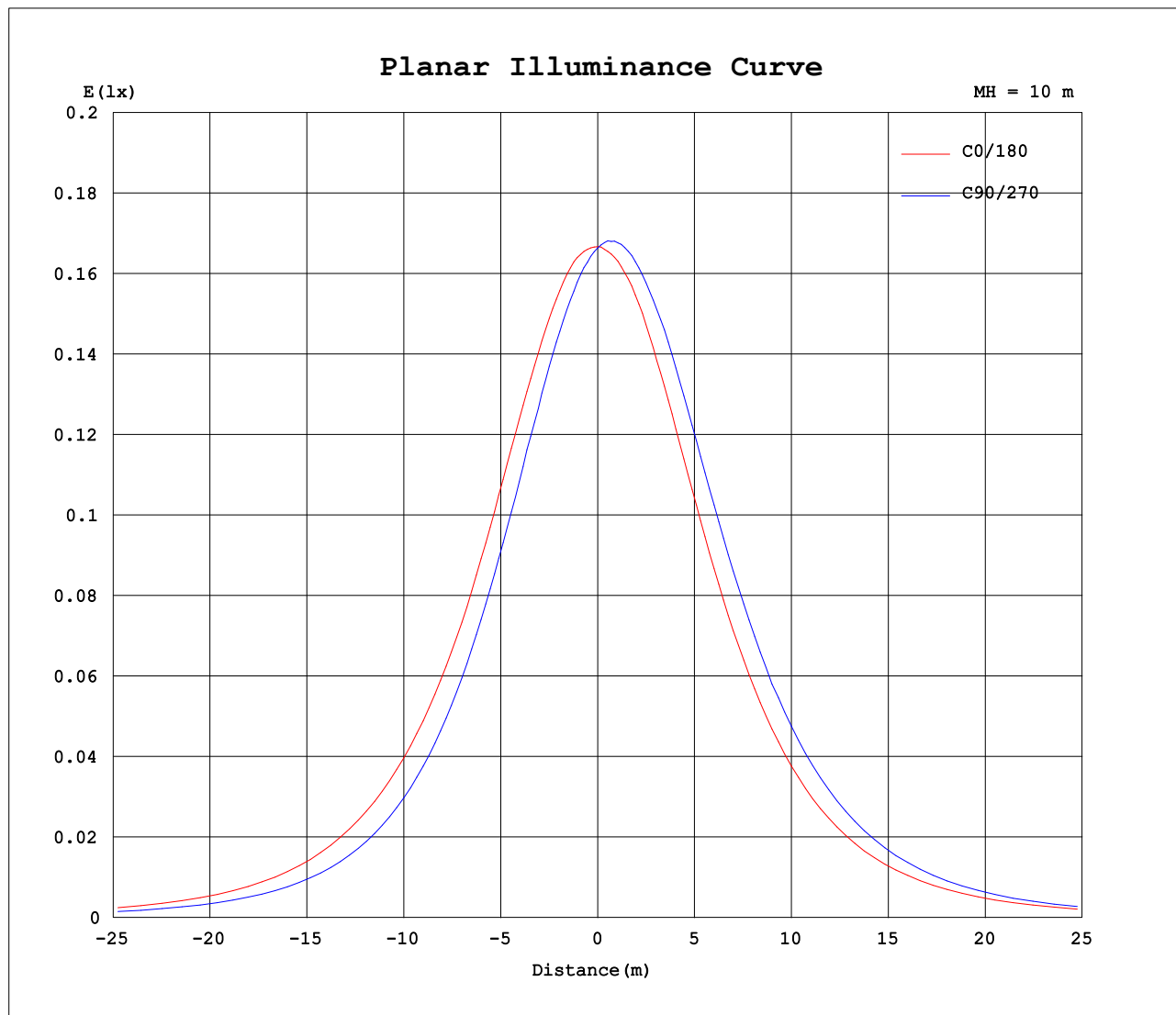
Test:U:24.00V I:0.1681A P:4.034W PF:1.000 Lamp Flux:46.2479x1 lm		
NAME: SP01-24V-5050-60-RGBW-3000K-80-B	TYPE: 硅胶	WEIGHT:
DIM.: 15mm*7mm	SPEC.:	SERIAL No.:20221220
MFR.: OLYMPIA	SUR.:1*0.0015	PROTECTION ANGLE:



C Range: 0 - 360DEG  
C Interval: 30.0DEG  
Test Speed: HIGH  
Temperature:25.3DEG  
Operators:WFW  
Test Date:2022-12-14

$\gamma$  Range: 0 - 180DEG  
 $\gamma$  Interval: 1.0DEG  
Test System:EVERFINE GO-2000B\_V1 SYSTEM V2.0.269  
Humidity:65.0%  
Test Distance:10.800m [K=1.0000]  
Remarks:

## Planar Illuminance Curve



C Range: 0 - 360DEG  
C Interval: 30.0DEG  
Test Speed: HIGH  
Temperature: 25.3DEG  
Operators: WFW  
Test Date: 2022-12-14

$\gamma$  Range: 0 - 180DEG  
 $\gamma$  Interval: 1.0DEG  
Test System: EVERFINE GO-2000B\_V1 SYSTEM V2.0.269  
Humidity: 65.0%  
Test Distance: 10.800m [K=1.0000]  
Remarks:

## LUMINOUS DISTRIBUTION INTENSITY DATA

Test:U:24.00V I:0.1681A P:4.034W PF:1.000 Lamp Flux:46.2479x1 lm		
NAME: SP01-24V-5050-60-RGBW-3000K-80-B	TYPE: 硅胶	WEIGHT:
DIM.: 15mm*7mm	SPEC.:	SERIAL No.:20221220
MFR.: OLYMPIA	SUR.:1*0.0015	PROTECTION ANGLE:

Table--1

UNIT: cd

C (DEG) γ (DEG)	0	30	60	90	120	150	180	210	240	270	300	330						
0	16.7	16.7	16.7	16.6	16.7	16.6	16.7	16.7	16.7	16.6	16.7	16.6						
5	16.7	16.4	16.3	16.2	16.2	16.3	16.6	16.8	17.0	17.0	17.0	16.8						
10	16.5	16.0	15.8	15.5	15.7	16.0	16.4	16.8	17.1	17.2	17.2	16.8						
15	16.2	15.5	15.1	14.8	15.0	15.4	16.0	16.7	17.1	17.3	17.2	16.8						
20	15.8	14.9	14.3	14.0	14.2	14.7	15.5	16.3	17.0	17.2	17.0	16.5						
25	15.2	14.1	13.4	13.0	13.3	13.9	14.8	15.8	16.6	16.9	16.7	16.1						
30	14.3	13.2	12.4	12.0	12.3	12.9	14.0	15.1	16.0	16.4	16.2	15.5						
35	13.4	12.1	11.2	10.9	11.1	11.9	13.0	14.2	15.2	15.7	15.5	14.6						
40	12.4	11.0	10.1	9.65	9.89	10.7	11.9	13.1	14.2	14.7	14.6	13.5						
45	11.2	9.75	8.84	8.43	8.64	9.45	10.7	11.9	12.9	13.5	13.4	12.4						
50	9.98	8.53	7.53	7.16	7.34	8.16	9.32	10.5	11.5	12.0	12.0	11.2						
55	8.60	7.24	6.23	5.91	6.07	6.81	7.91	9.03	9.88	10.3	10.3	9.77						
60	7.12	5.91	4.98	4.71	4.84	5.52	6.47	7.44	8.14	8.43	8.51	8.22						
65	5.63	4.59	3.81	3.60	3.69	4.30	5.00	5.84	6.37	6.47	6.67	6.54						
70	4.20	3.35	2.76	2.56	2.70	3.14	3.62	4.28	4.67	4.52	4.95	4.86						
75	2.84	2.25	1.84	1.62	1.84	2.10	2.44	2.82	3.12	2.73	3.30	3.24						
80	1.63	1.24	1.04	0.86	1.09	1.22	1.43	1.61	1.72	1.28	1.81	1.84						
85	0.64	0.45	0.42	0.35	0.49	0.50	0.52	0.64	0.62	0.52	0.61	0.69						
90	0.15	0.10	0.12	0.12	0.12	0.08	0.01	0.06	0.00	0.07	0.03	0.08						
95	0.10	0.10	0.11	0.14	0.10	0.10	0.03	0.02	0.00	0.05	0.03	0.03						
100	0.10	0.10	0.11	0.14	0.10	0.11	0.04	0.02	0.05	0.08	0.06	0.03						
105	0.10	0.12	0.11	0.15	0.10	0.13	0.06	0.02	0.06	0.08	0.07	0.03						
110	0.10	0.13	0.11	0.16	0.10	0.15	0.07	0.02	0.07	0.08	0.07	0.03						
115	0.10	0.14	0.11	0.17	0.10	0.15	0.08	0.02	0.08	0.08	0.08	0.08						
120	0.10	0.16	0.11	0.18	0.12	0.18	0.09	0.06	0.09	0.08	0.09	0.08						
125	0.10	0.17	0.11	0.19	0.15	0.18	0.11	0.06	0.12	0.08	0.11	0.08						
130	0.10	0.17	0.15	0.20	0.17	0.19	0.12	0.06	0.12	0.08	0.12	0.08						
135	0.10	0.19	0.16	0.21	0.18	0.19	0.14	0.06	0.14	0.08	0.13	0.08						
140	0.13	0.19	0.17	0.21	0.19	0.20	0.15	0.08	0.14	0.08	0.15	0.08						
145	0.17	0.20	0.19	0.21	0.19	0.20	0.15	0.09	0.17	0.09	0.17	0.09						
150	0.17	0.20	0.19	0.21	0.19	0.20	0.19	0.10	0.18	0.10	0.17	0.12						
155	0.19	0.20	0.19	0.21	0.19	0.20	0.20	0.16	0.19	0.14	0.21	0.16						
160	0.19	0.20	0.19	0.21	0.19	0.20	0.20	0.18	0.21	0.18	0.21	0.17						
165	0.19	0.20	0.19	0.21	0.19	0.20	0.20	0.18	0.21	0.18	0.21	0.19						
170	0.19	0.20	0.19	0.21	0.19	0.20	0.20	0.18	0.21	0.18	0.21	0.19						
175	0.19	0.20	0.19	0.21	0.19	0.20	0.20	0.18	0.21	0.19	0.21	0.19						
180	0.19	0.19	0.21	0.21	0.20	0.20	0.20	0.18	0.20	0.19	0.21	0.21						

C Range: 0 - 360DEG  
C Interval: 30.0DEG  
Test Speed: HIGH  
Temperature:25.3DEG  
Operators:WFW  
Test Date:2022-12-14

γ Range: 0 - 180DEG  
γ Interval: 1.0DEG  
Test System:EVERFINE GO-2000B\_V1 SYSTEM V2.0.269  
Humidity:65.0%  
Test Distance:10.800m [K=1.0000]  
Remarks:

Photometric Data Table [cd]

G/C	0.0	30.0	60.0	90.0	120.0	150.0	180.0	210.0	240.0	270.0
0.0	16.67	16.66	16.70	16.64	16.69	16.60	16.67	16.66	16.70	16.64
3.0	16.67	16.52	16.46	16.35	16.42	16.43	16.62	16.73	16.89	16.88
6.0	16.67	16.37	16.21	16.05	16.15	16.27	16.57	16.80	17.04	17.04
9.0	16.59	16.14	15.88	15.68	15.81	16.03	16.47	16.83	17.12	17.18
12.0	16.41	15.86	15.52	15.28	15.44	15.76	16.29	16.84	17.12	17.25
15.0	16.23	15.52	15.09	14.83	15.02	15.41	16.05	16.72	17.12	17.27
18.0	15.95	15.15	14.62	14.31	14.57	15.00	15.73	16.48	17.08	17.27
21.0	15.64	14.71	14.11	13.78	14.05	14.55	15.38	16.26	16.91	17.18
24.0	15.30	14.25	13.56	13.22	13.49	14.05	14.95	15.95	16.68	17.01
27.0	14.84	13.75	12.97	12.62	12.88	13.50	14.49	15.56	16.36	16.75
30.0	14.33	13.18	12.38	12.00	12.28	12.92	13.95	15.13	16.01	16.41
33.0	13.76	12.56	11.71	11.32	11.58	12.30	13.38	14.62	15.55	15.99
36.0	13.17	11.94	11.02	10.61	10.88	11.63	12.78	14.03	15.01	15.49
39.0	12.57	11.20	10.32	9.895	10.14	10.92	12.12	13.36	14.39	14.91
42.0	11.92	10.50	9.575	9.175	9.388	10.21	11.42	12.67	13.69	14.15
45.0	11.24	9.750	8.840	8.427	8.639	9.452	10.66	11.91	12.93	13.46
48.0	10.51	9.043	8.064	7.678	7.863	8.689	9.852	11.09	12.10	12.61
51.0	9.720	8.281	7.275	6.910	7.095	7.886	9.055	10.23	11.20	11.66
54.0	8.896	7.506	6.479	6.155	6.326	7.076	8.190	9.352	10.23	10.66
57.0	8.009	6.709	5.723	5.442	5.571	6.300	7.345	8.417	9.208	9.568
60.0	7.123	5.905	4.975	4.714	4.844	5.518	6.465	7.441	8.141	8.432
63.0	6.230	5.136	4.269	4.029	4.137	4.770	5.592	6.492	7.046	7.290
66.0	5.343	4.333	3.597	3.385	3.486	4.057	4.707	5.516	6.035	6.091
69.0	4.484	3.606	2.966	2.762	2.883	3.364	3.896	4.566	4.997	4.914
72.0	3.647	2.872	2.371	2.166	2.329	2.699	3.135	3.653	4.027	3.819
75.0	2.843	2.249	1.844	1.619	1.844	2.097	2.443	2.821	3.120	2.732
78.0	2.094	1.605	1.339	1.128	1.373	1.557	1.833	2.080	2.255	1.838
81.0	1.401	1.058	0.9018	0.7470	0.9571	1.052	1.251	1.407	1.486	1.082
84.0	0.8058	0.5942	0.5209	0.4286	0.5833	0.6222	0.7042	0.8051	0.8149	0.6385
87.0	0.3685	0.2212	0.2434	0.1866	0.2988	0.2625	0.2481	0.3130	0.2895	0.3057
90.0	0.1460	0.0970	0.1178	0.1177	0.1181	0.0831	0.0139	0.0559	0	0.0697
93.0	0.1039	0.0970	0.1108	0.1178	0.1039	0.0970	0.0208	0.0208	0	0.0485
96.0	0.0970	0.1039	0.1108	0.1385	0.1039	0.1108	0.0277	0.0208	0.0346	0.0416
99.0	0.0970	0.1039	0.1108	0.1385	0.1039	0.1108	0.0347	0.0208	0.0485	0.0827
102.0	0.0970	0.1039	0.1108	0.1455	0.1039	0.1108	0.0417	0.0208	0.0623	0.0831
105.0	0.0970	0.1247	0.1108	0.1524	0.1039	0.1316	0.0554	0.0208	0.0555	0.0831
108.0	0.0970	0.1384	0.1108	0.1524	0.1039	0.1386	0.0623	0.0208	0.0623	0.0831
111.0	0.0970	0.1385	0.1108	0.1593	0.1039	0.1454	0.0693	0.0208	0.0763	0.0831
114.0	0.0970	0.1385	0.1108	0.1731	0.1039	0.1524	0.0763	0.0208	0.0762	0.0831
117.0	0.0970	0.1386	0.1108	0.1801	0.1039	0.1524	0.0832	0.0276	0.0831	0.0831
120.0	0.0970	0.1593	0.1108	0.1801	0.1177	0.1800	0.0900	0.0553	0.0901	0.0831
123.0	0.0970	0.1593	0.1108	0.1870	0.1315	0.1801	0.1040	0.0623	0.0970	0.0831
126.0	0.0970	0.1731	0.1108	0.1939	0.1454	0.1939	0.1177	0.0623	0.1108	0.0831
129.0	0.0970	0.1731	0.1524	0.1940	0.1731	0.1939	0.1177	0.0623	0.1177	0.0831
132.0	0.1038	0.1870	0.1524	0.2008	0.1800	0.1939	0.1177	0.0623	0.1177	0.0831
135.0	0.1039	0.1870	0.1593	0.2078	0.1801	0.1939	0.1386	0.0623	0.1385	0.0831
138.0	0.1316	0.1939	0.1593	0.2078	0.1870	0.2008	0.1455	0.0692	0.1385	0.0831
141.0	0.1384	0.2008	0.1868	0.2078	0.1870	0.2008	0.1524	0.0830	0.1457	0.0831
144.0	0.1593	0.2008	0.1870	0.2078	0.1870	0.2008	0.1524	0.0831	0.1662	0.0831
147.0	0.1662	0.2008	0.1870	0.2078	0.1870	0.2008	0.1665	0.0969	0.1662	0.1038
150.0	0.1731	0.2008	0.1870	0.2078	0.1870	0.2008	0.1871	0.1039	0.1801	0.1039
153.0	0.1801	0.2008	0.1870	0.2078	0.1870	0.2008	0.1939	0.1383	0.1870	0.1176
156.0	0.1870	0.2008	0.1870	0.2078	0.1870	0.2008	0.2008	0.1799	0.1940	0.1454
159.0	0.1870	0.2008	0.1870	0.2078	0.1870	0.2008	0.2008	0.1801	0.2078	0.1801
162.0	0.1870	0.2008	0.1870	0.2078	0.1870	0.2008	0.2008	0.1801	0.2078	0.1801
165.0	0.1870	0.2008	0.1870	0.2078	0.1870	0.2008	0.2008	0.1801	0.2078	0.1801
168.0	0.1870	0.2008	0.1870	0.2078	0.1870	0.2008	0.2008	0.1801	0.2078	0.1801
171.0	0.1939	0.2008	0.1870	0.2078	0.1939	0.2008	0.2008	0.1801	0.2078	0.1869
174.0	0.1939	0.2008	0.1870	0.2078	0.1939	0.2008	0.2008	0.1801	0.2078	0.1870
177.0	0.1939	0.1939	0.2078	0.2078	0.1870	0.2008	0.2008	0.1801	0.2078	0.1870
180.0	0.1939	0.1939	0.2078	0.2078	0.2008	0.2008	0.2008	0.1801	0.2008	0.1939
G/C	300.0	330.0								
0.0	16.69	16.60								
3.0	16.89	16.73								
6.0	17.06	16.81								
9.0	17.19	16.84								
12.0	17.20	16.84								
15.0	17.18	16.76								
18.0	17.11	16.63								
21.0	16.99	16.43								
24.0	16.80	16.21								
27.0	16.54	15.90								
30.0	16.23	15.46								

C Range: 0 - 360DEG  
 C Interval: 30.0DEG  
 Test Speed: HIGH  
 Temperature: 25.3DEG  
 Operators: WFW  
 Test Date: 2022-12-14

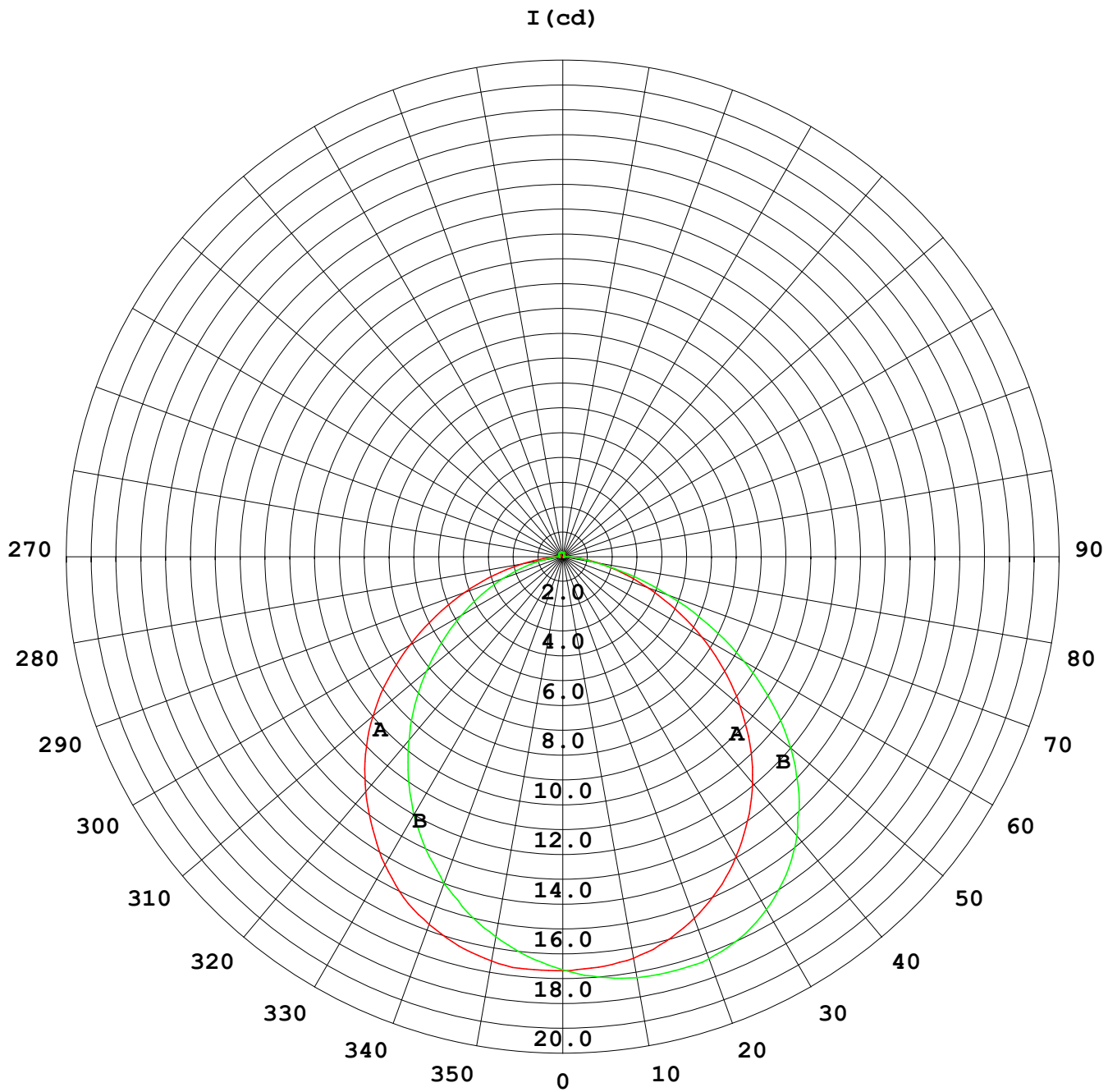
γ Range: 0 - 180DEG  
 γ Interval: 1.0DEG  
 Test System: EVERFINE GO-2000B\_V1 SYSTEM V2.0.269  
 Humidity: 65.0%  
 Test Distance: 10.800m [K=1.0000]  
 Remarks:

## Photometric Data Table [cd]

33.0	15.82	14.97
36.0	15.33	14.41
39.0	14.76	13.76
42.0	14.15	13.10
45.0	13.41	12.40
48.0	12.57	11.67
51.0	11.64	10.88
54.0	10.65	10.10
57.0	9.595	9.138
60.0	8.514	8.223
63.0	7.399	7.171
66.0	6.320	6.188
69.0	5.301	5.211
72.0	4.276	4.193
75.0	3.300	3.237
78.0	2.366	2.392
81.0	1.548	1.588
84.0	0.8147	0.8956
87.0	0.2688	0.3685
90.0	0.0277	0.0836
93.0	0.0277	0.0278
96.0	0.0346	0.0277
99.0	0.0348	0.0277
102.0	0.0486	0.0277
105.0	0.0692	0.0277
108.0	0.0625	0.0277
111.0	0.0694	0.0277
114.0	0.0762	0.0555
117.0	0.0831	0.0762
120.0	0.0900	0.0762
123.0	0.1039	0.0762
126.0	0.1108	0.0762
129.0	0.1110	0.0762
132.0	0.1317	0.0762
135.0	0.1316	0.0762
138.0	0.1386	0.0762
141.0	0.1593	0.0830
144.0	0.1662	0.0900
147.0	0.1731	0.0970
150.0	0.1732	0.1176
153.0	0.1939	0.1590
156.0	0.2009	0.1593
159.0	0.2147	0.1593
162.0	0.2147	0.1731
165.0	0.2147	0.1869
168.0	0.2147	0.1870
171.0	0.2147	0.1870
174.0	0.2147	0.1870
177.0	0.2147	0.1870
180.0	0.2147	0.2147

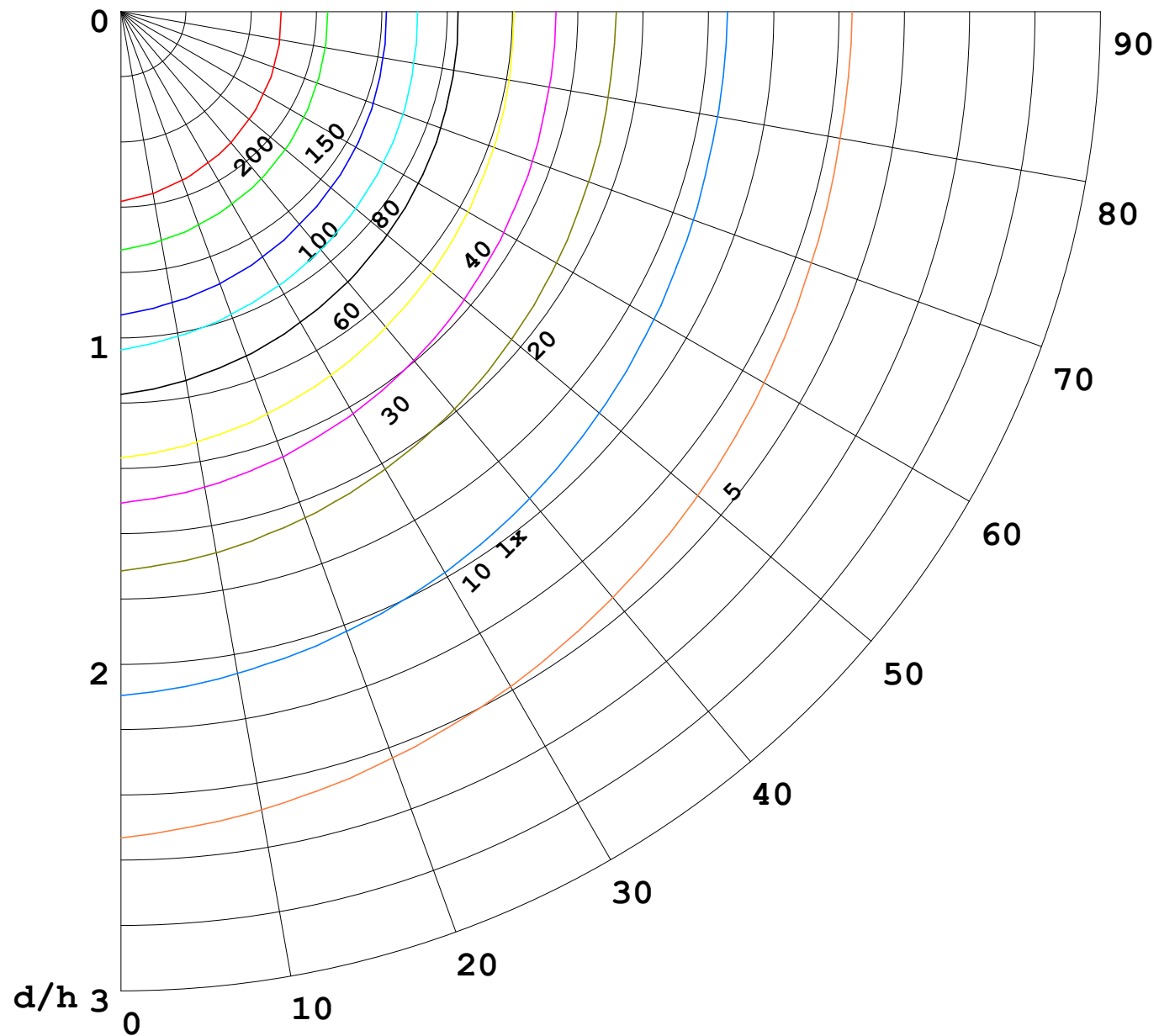
C Range: 0 - 360DEG  
C Interval: 30.0DEG  
Test Speed: HIGH  
Temperature: 25.3DEG  
Operators: WFW  
Test Date: 2022-12-14

γ Range: 0 - 180DEG  
γ Interval: 1.0DEG  
Test System: EVERFINE GO-2000B\_V1 SYSTEM V2.0.269  
Humidity: 65.0%  
Test Distance: 10.800m [K=1.0000]  
Remarks:



1000 lm

$\kappa = 1$



F = 5000 lm  
 K = 0.7  
 Hcc = 0.0 m  
 Hfc = 0.0 m  
 Eave = 100 lx

	Pcc	Pw	Pfc
—	70	50	30
—	50	30	20

